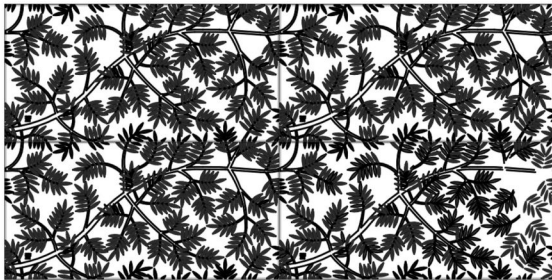


4 castings arrayed
scale 4:1

(x4) hole for 6.35 dia bolt - dn.



Pattern : Locust

Material : Cast Ductile Iron

Locust 1016 x 504 mm Channel Grate
Locust 20" x 40" Trench Grate

Finish : Baked on oil

Thickness : 31.75

Drawing no:LOC-CG-1016-504 Product no : CI65-1016-504CG

Dimensions : 1016 x 504,8250

Units : mm



Unit 5 Cotswold Business Park
Millfield Lane
Beds LU1 4AJ

Load Class : N/A

Flow rate : 7%

info@lateraldesignstudio.co.uk

0208 450 2244

1. Due to casting inconsistencies all dimensions are nominal
2. No openings greater than 6.35 mm
3. Grates will be designed to support the load expectation based on being supported on four sides. Please provide load info.
4. Weight 82 pounds

5. Please discuss about channel drain options

